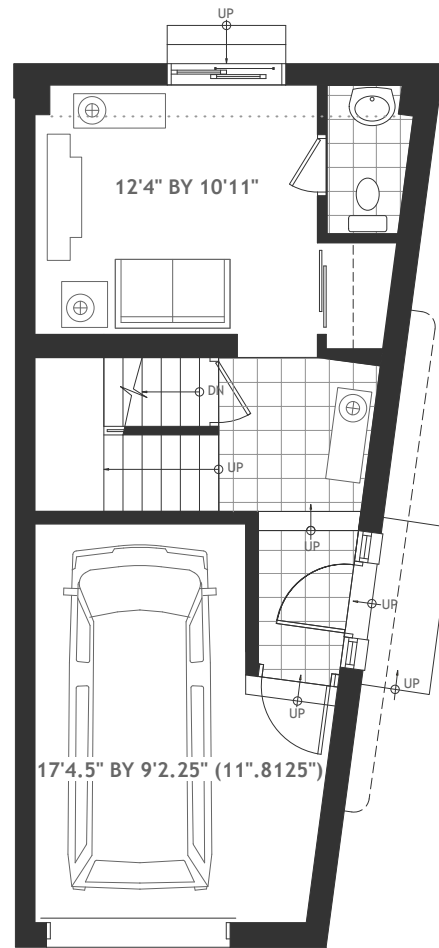
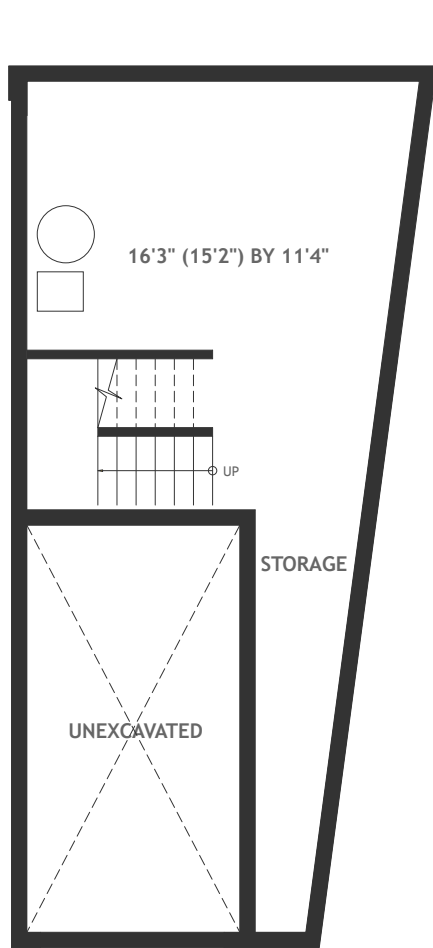


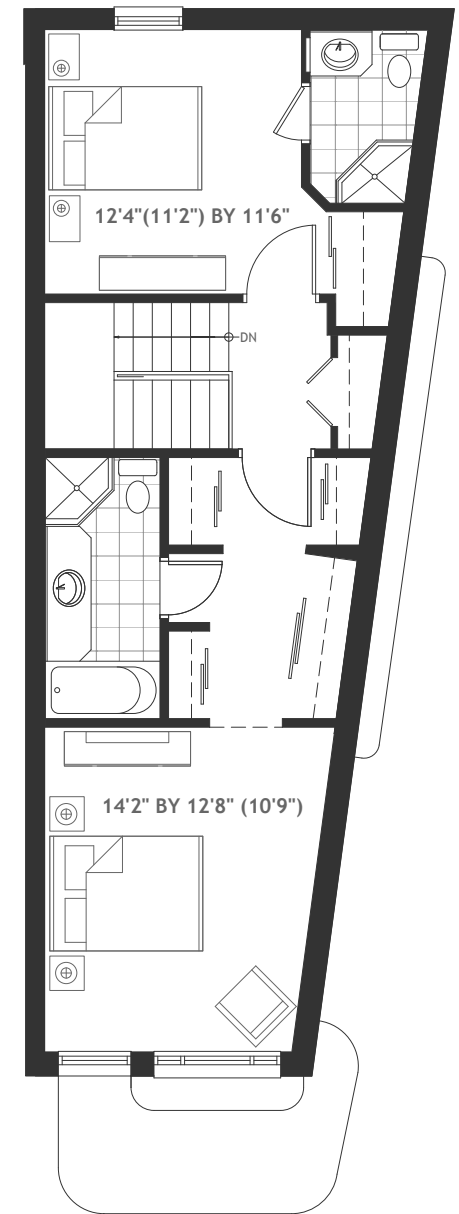
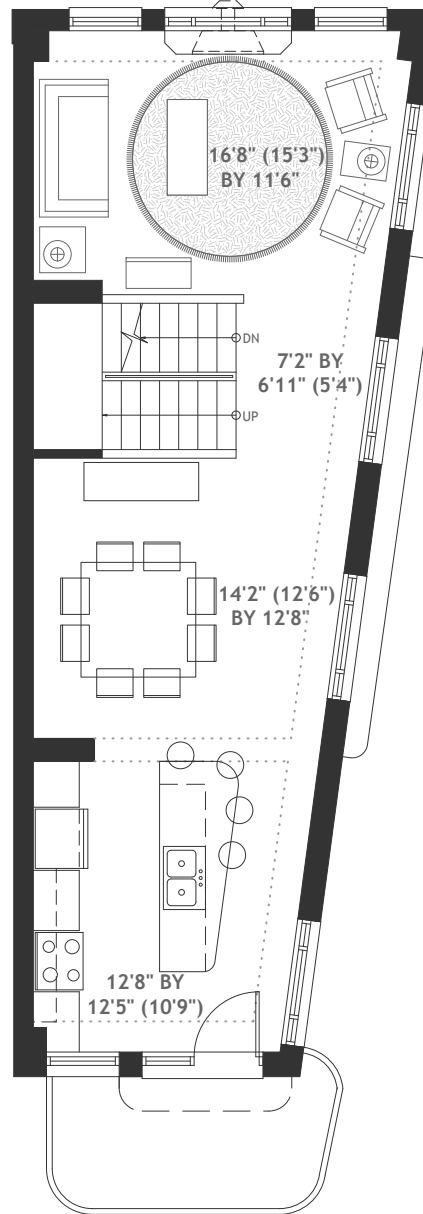
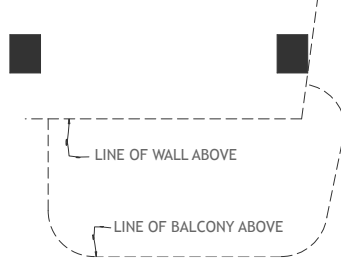
55 EVELYN AVE

Contemporary townhouses in downtown Ottawa

SHERBROOKE
URBAN DEVELOPMENTS LTD.



17' 4 1/2" by 9' 2 1/4" (11' 13/16")



E&OE All dimensions are approximate.
Plans and specifications are subject to site conditions and change without notice

EVELYN
ON THE
MAIN

BASEMENT

GROUND FLOOR

SECOND FLOOR

THIRD FLOOR