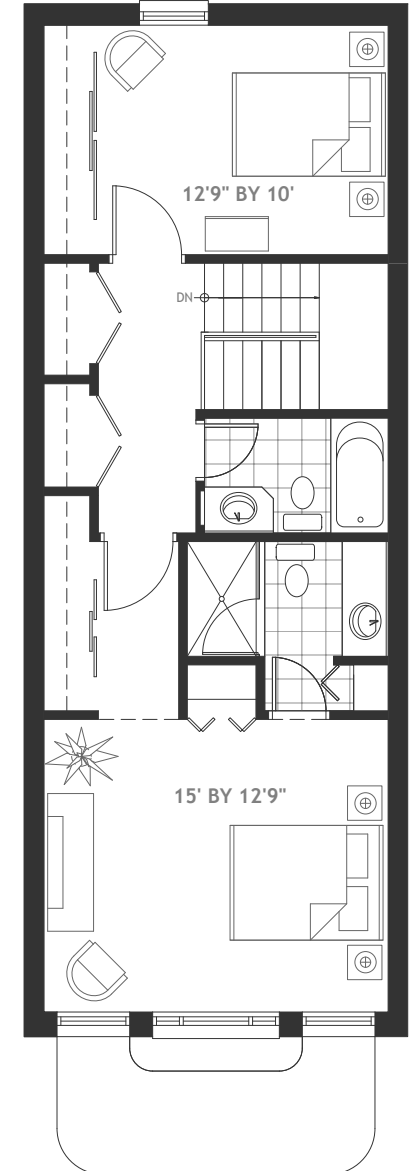
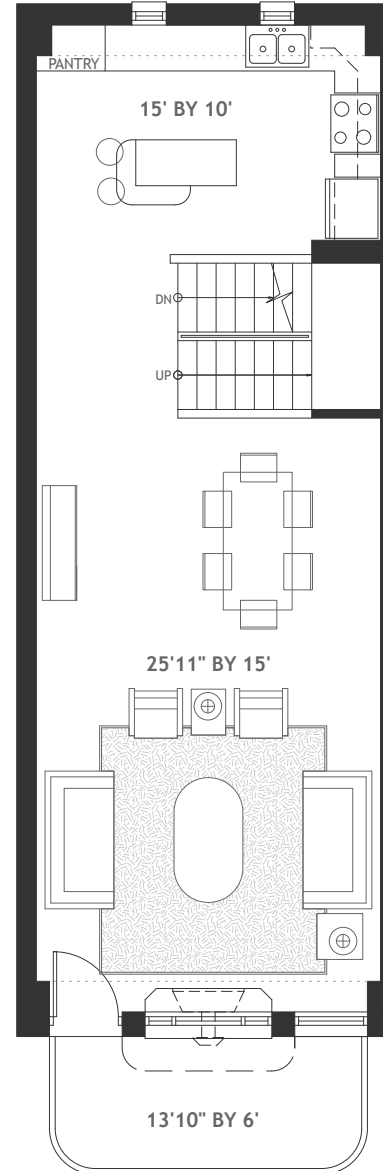
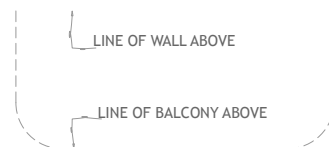
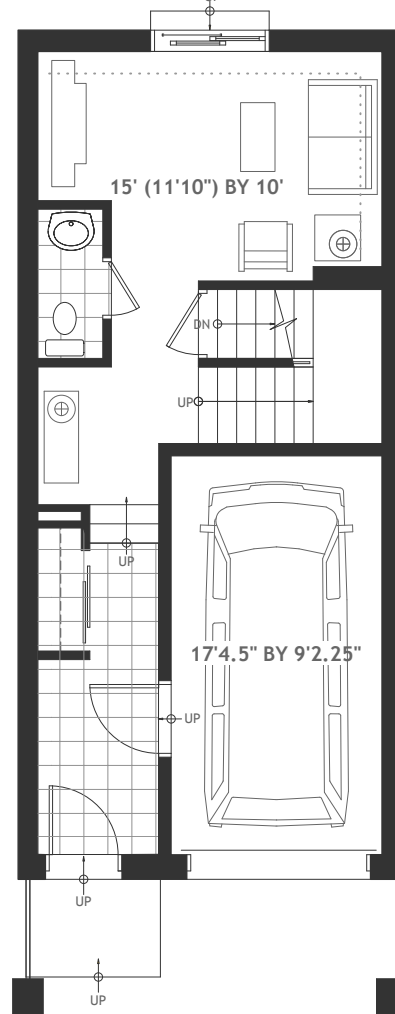
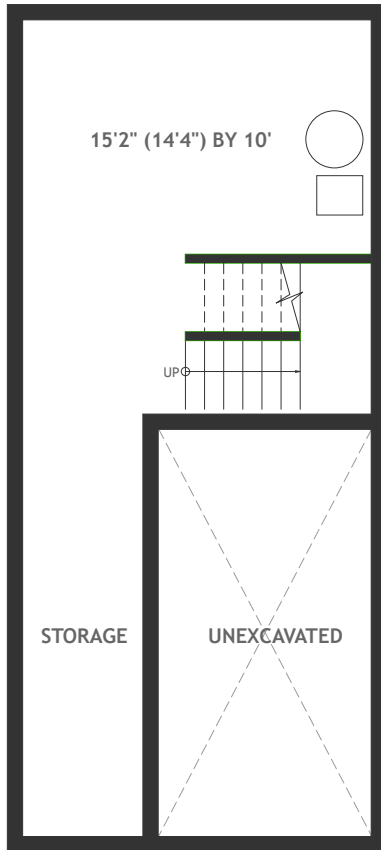


43 - 53 EVELYN AVE

Contemporary townhouses in downtown Ottawa

SHERBROOKE
URBAN DEVELOPMENTS LTD.



E&OE All dimensions are approximate.
Plans and specifications are subject to site
conditions and change without notice

EVELYN
ON THE
MAIN

BASEMENT — GROUND FLOOR — SECOND FLOOR — THIRD FLOOR